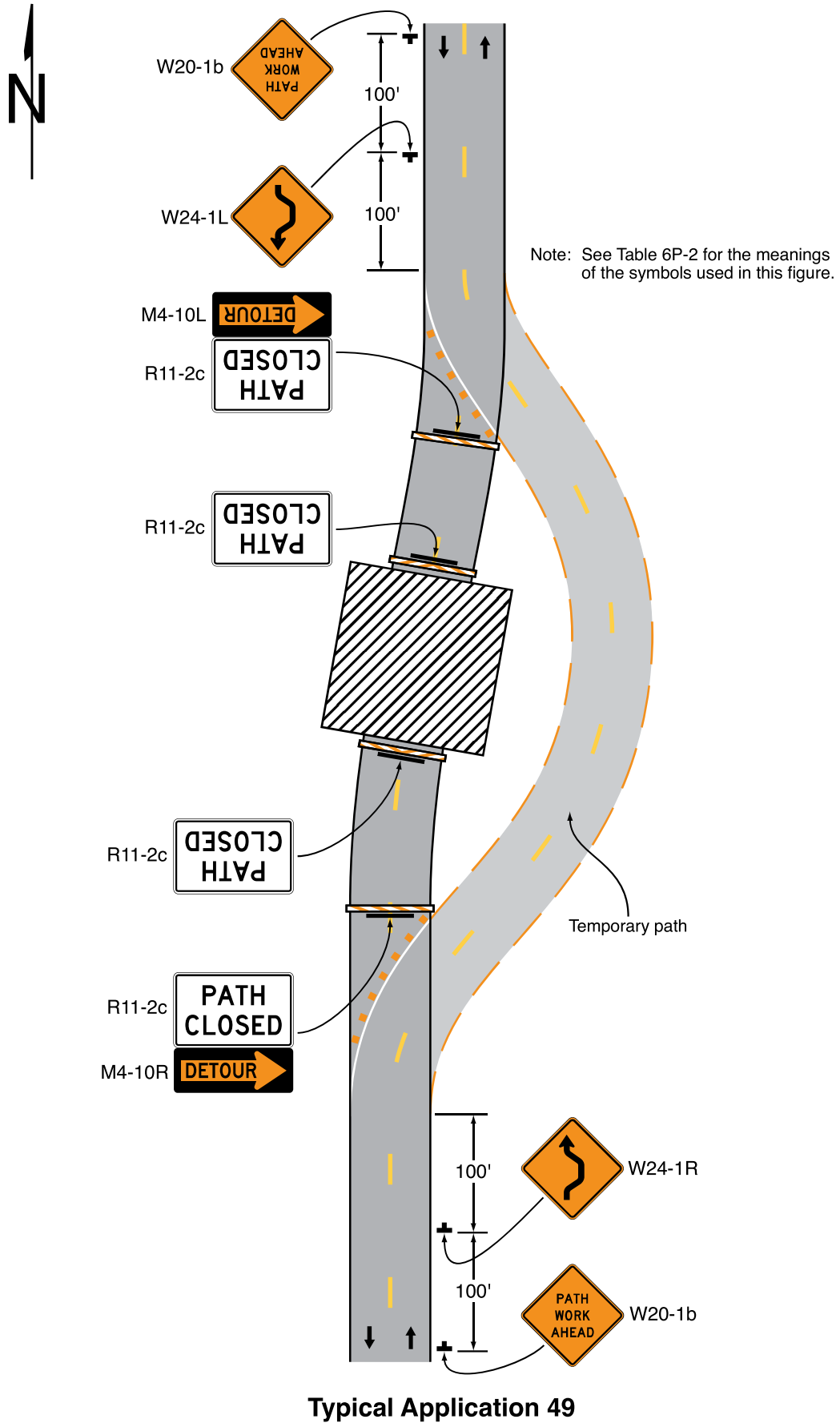


**Notes for Figure 6P-49—Typical Application 49**  
**Shared-Use Path Closure with a Diversion**

*Guidance:*

1. *The temporary paved shared-use path should be at least as wide as the shared-use path that was temporarily closed.*

Figure 6P-49. Shared-Use Path Closure with a Diversion (TA-49)



Typical Application 49